



Introduction to
Community Case Management
Essentials

A Guide for Program Managers



Advancing community health worldwide.

December 2010

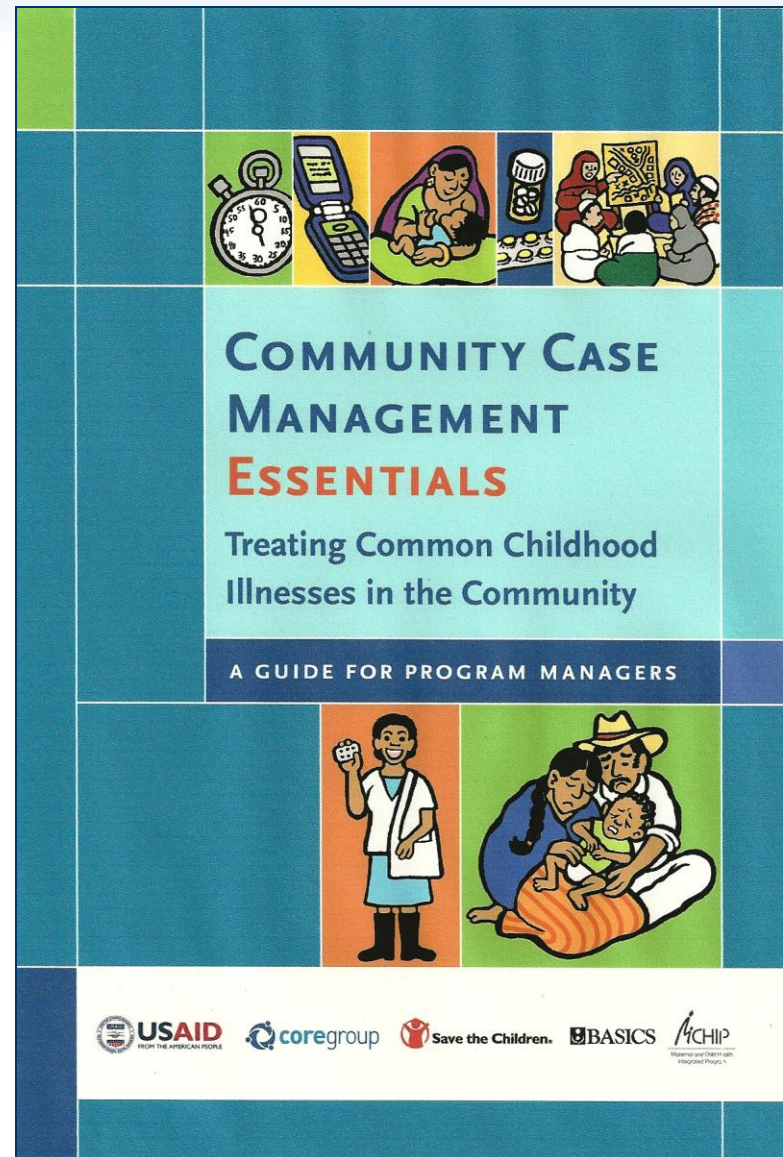




“The publication of *Community Case Management Essentials* is exceptionally well-timed. It comes at a moment of increasing need for community-based treatment of child illness...

It is part of the continuing efforts of our community to apply the results of research and program experience in improving the survival, health and well-being of children, families, and communities around the world.”

Alfred V. Bartlett, III, M.D., F.A.A.P.
Senior Advisor for Child Survival
USAID, Bureau for Global Health
(Excerpt from Forward)





Community Case Management (CCM) is a strategy to deliver lifesaving curative interventions for common childhood illnesses, in particular where there is little access to facility-based services.

Guide Presentation

- Recommended Citation
- Guide Overview
- Purpose of the Guide
- Intended Audience
- Contributors
- Guide Organization
- Guide Guidance
- C-IMCI & CCM
- CCM Graphic
- Considerations & Next Steps
- Contact Information



Recommended Citation

CORE Group, Save the Children, BASICS and MCHIP, 2010. *Community Case Management Essentials: Treating Common Childhood Illnesses in the Community—A Guide for Program Managers*. Washington, DC.

- Inspired by *Immunization Essentials* and conceived in 2004
- Highly collaborative effort among many different organizations
- Based on experiences from dozens of countries
- 231 pages, 55 boxes, 32 figures, 20 tables, 160 references, and 1 laminated graphic
- Made possible by support from USAID and MCHIP

CCM Essentials provides practical guidance for designing, implementing, and evaluating CCM.

This guide serves as an introduction and resource for CCM, and is designed to be complementary to evidence-based protocols recommended by WHO.

Intended Audience

The CCM Essentials guide is designed for program managers at the district and local levels including government and NGO personnel, but central-level planners, advocates, academics, and other international health professionals will also find the guide useful.



Contributors

Technical Writing/Editing Group:

David Marsh, Lead Advisor, Save the Children, USA
Ashley Aakesson, Children's Nutrition Program of Haiti
Kechi Anah, Africare
Al Bartlett, USAID
Kendra Blackett-Dibinga, Africare
Kathryn Bolles, Save the Children, USA
Jane Briggs, Management Sciences for Health
Jennifer Bryce, JHU
Sarah Chaney, BASICS
Paul Crystal, BASICS
Penny Dawson, John Snow International
Emmanuel d'Harcourt, International Rescue Committee
Amy Ellis, JHU
Paige Harrigan, Save the Children, USA
Katie Haxall, International Rescue Committee
Carolina Hilari, Save the Children, USA
Robin Houston, Consultant

Laura McGorman, USAID
Linda Morales, Consultant
Patricia Paredes, formerly with USAID
Bertha Pooley, Save the Children, USA
Elena Reilly, Save the Children, USA
Jim Ricca, MCHIP
Alfonso Rosales, ChildFund International
Anne Siegel, JHU
Diana Silimperi, Management Sciences for Health
Judith Stanley, on behalf of UNICEF
Eric Starbuck, Save the Children, USA
Eric Swedberg, Save the Children, USA
Aboubacry Thiam, BASICS
Melissa Thumm, Management Sciences for Health
Laban Tsuma, Plan International
Emmanuel Wansi, BASICS
Peter Winch, JHU
Cathy Wolfheim, WHO



Contributors

CORE Group Support:

Shannon Downey
Ann Hendrix-Jenkins
Karen LeBan
Lynette Walker
Anna West

Steering Committee:

David Marsh, Save the Children, USA
Salim Sadruddin, Save the Children, USA
Magdalena Serpa, AED
Emmanuel Wansi, BASICS
Ann Hendrix-Jenkins, CORE Group
Karen LeBan, CORE Group
Emmanuel d'Harcourt, IRC
Mary Carnell, MCHIP/John Snow Inc.
Asha George, UNICEF
Aboubacar Kampo, UNICEF
Jill Boezwinkle, USAID
Maria Francisco, USAID
Troy Jacobs, USAID
Nazo Kureshy, USAID
Erika Lutz, USAID
Bernadette Daelmans, WHO
Cathy Wolfheim, WHO

Editorial/Writing Consultant: Nancy Newton

Graphic Designers: Sonya Cohen Cramer
Gwen Glesmann

Illustrator: Regina Doyle

Summary

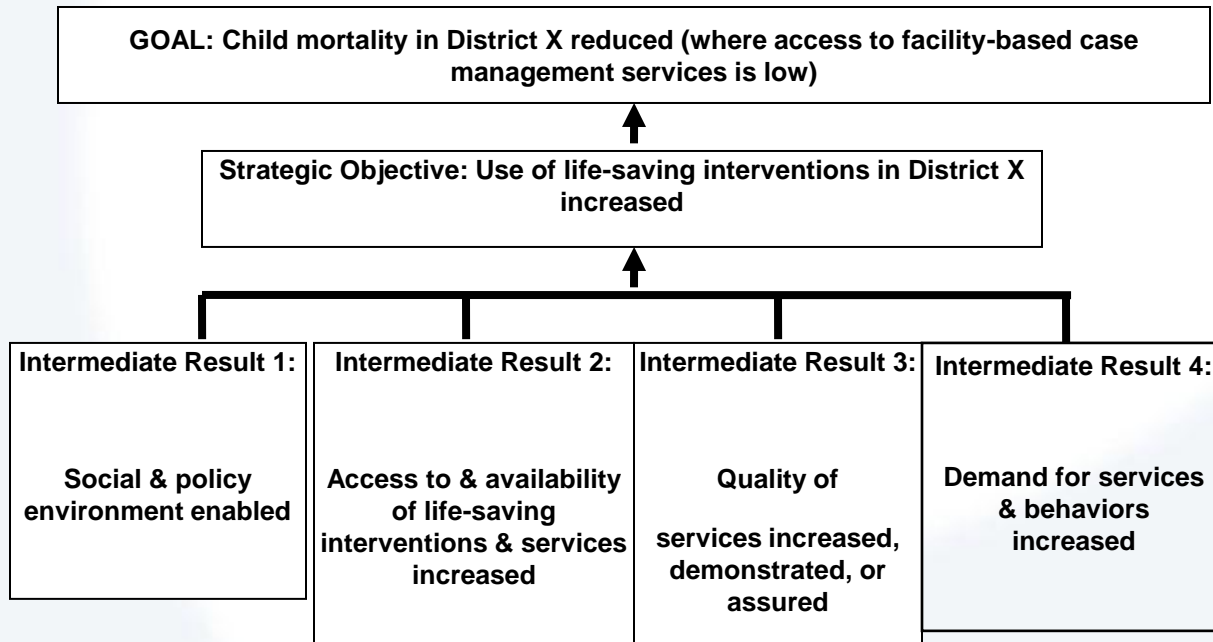
Technical Writing/Editing Group: 35

Steering Committee: 17

Numerous Country Examples

- I: Introduction to Community Case Management & Guide
- II: Analyzing the Situation to Make Decisions
- III: Enabling a Supportive Social and Policy Environment
- IV: Increasing Access to and Availability of CCM Services
- V: Increasing the Quality of CCM
- VI: Increasing Demand for CCM Services & Related Behaviors
- VII: Increasing Use of CCM Intervention
- VIII: Future Directions of CCM

} F
R r
e a
s m
u e
l w
t o
s r
k



Includes how to design a good CCM strategy which:

- addresses access to, quality of, and demand for CCM services;
- ensures that CCM has the support of decision-makers, health care providers, and community members; and
- is put into action in tandem with improvements in the health system.

Within this Community-Integrated Management of Childhood Illnesses (C-IMCI) Framework, CCM falls in **Element 2**— *Increasing appropriate and accessible health care and information from community-based providers.*

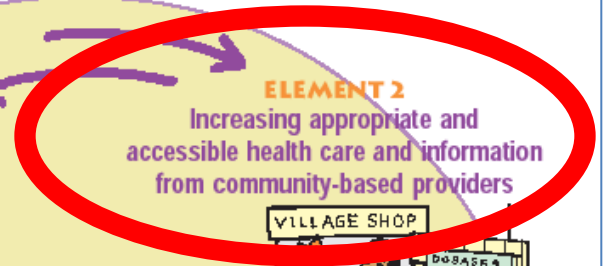
It includes promoting timely care-seeking , encouraging appropriate home care, as well as referrals to and supervision from facilities.

HOUSEHOLD & COMMUNITY IMCI AN IMPLEMENTATION FRAMEWORK

ELEMENT 1
Improving partnerships between health facilities and the communities they serve



ELEMENT 2
Increasing appropriate and accessible health care and information from community-based providers



ELEMENT 3
Integrating promotion of key family practices critical for child health & nutrition



MULTI-SECTORAL PLATFORM

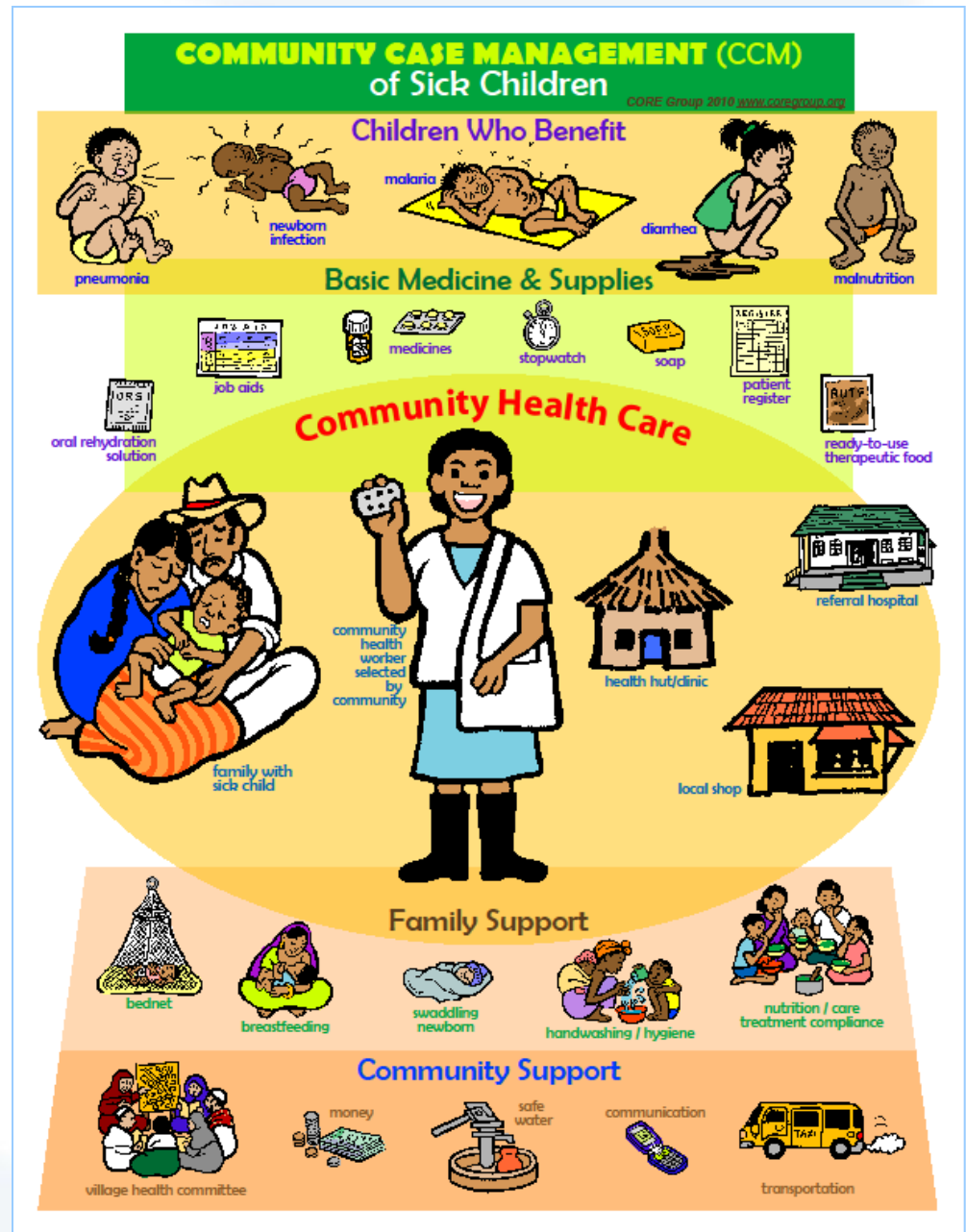
Optimizing a multi-sectoral platform to support sustainable child health & nutrition

CCM Graphic

Evidence-based curative child survival interventions used in CCM

- antibiotics for pneumonia
- antimalarials for malaria
- oral rehydration therapy and zinc for diarrhea
- antibiotics for newborn sepsis
- antibiotics for dysentery
- ready-to-use therapeutic foods (RUTF) for acute severe malnutrition

Front





- CCM targets the conditions that cause the most child death in developing countries.
- CCM relies on evidence-based child survival interventions.
- CCM brings curative interventions to children in those communities that are hardest to reach.
- CCM utilizes trained, supervised community members, linked to facility-based services, to deliver interventions.
- CCM is consistent with evidence-based protocols recommended by WHO, UNICEF, and other international health agencies.

Community Case Management of Sick Children (CCM)

- **CCM targets the conditions that cause the most child death in developing countries.** Leading causes of death among children under five years of age are pneumonia, diarrhea, malaria, and neonatal causes. Under-nutrition is estimated to be an underlying cause in 35% of all under-five deaths, even more so in those associated with severe infections.
- **CCM relies on evidence-based child survival interventions.** A few (30 or so) interventions have been proven to save the lives of newborns and children under five, at a price that is affordable in developing countries. CCM expands the use of curative interventions while supporting prevention. Key interventions include preventative measures such as exclusive breastfeeding in the first six months of life and treatments such as antibiotics for dysentery, pneumonia and neonatal sepsis; oral rehydration therapy and zinc for diarrhea; anti-malarials for malaria; Vitamin A for measles; and Ready-to-Use Therapeutic Foods for acute severe malnutrition.
- **CCM brings curative health care to children in those communities that are hardest to reach.** CCM is a strategy for populations that lack continual access to curative interventions, typically, but not exclusively, poor, rural communities. Among the world's countries, mortality is considerably higher in children who live in rural areas and in the poorest households.
- **CCM utilizes trained, supervised community members, linked to facility-based services, to deliver interventions.** These community members can be formal Ministry of Health (MOH) outreach workers, paraprofessional Community Health Workers (CHWs), of which there are many varieties, or private sector workers, among others. CHWs may perform their duties from their homes, a community-constructed building, or government or private health facility.
- **CCM is consistent with practices recommended by WHO, UNICEF, and other international health agencies.** WHO, UNICEF, and other international agencies have jointly called on countries to adopt and promote policies and programs that have strong community-based components to deliver interventions for diarrhea, malaria, pneumonia, newborn care, and acute severe malnutrition, while improving services at first-level health facilities.



CORE Group, Save the Children, BASICS and MCHIP, 2010. *Community Case Management Essentials: Treating Common Childhood Illnesses in the Community. A Guide for Program Managers.* Washington, DC.

For more information on CCM, visit www.coregroup.org

Considerations

- May not reflect most recent policy or guideline changes
- Some sections may not be relevant to all programs; refer to specific sections as needed
- Need for translation into other languages

Next Steps

- Continue dissemination and promotion through USAID, UNICEF, NGOs and Country Programs
- Translate Guide into French in 2011



CCM *Essentials* Guide and Graphic
available on CORE Group's website at
<http://www.coregroup.org/ccm>

or

for hard copies e-mail:
contact@coregroupdc.org